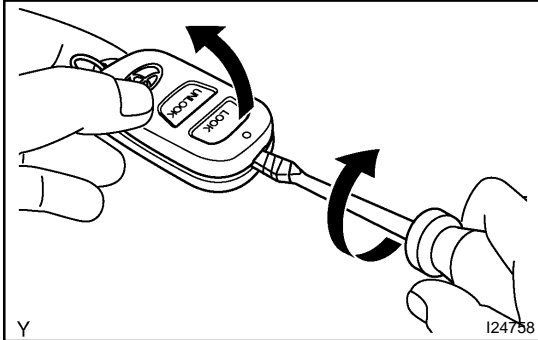


REPLACEMENT

1. REMOVE TRANSMITTER BATTERY

NOTICE:

Special caution should be taken for handling each component as they are precision electronic components.



(a) Using a screwdriver, open the transmitter case.

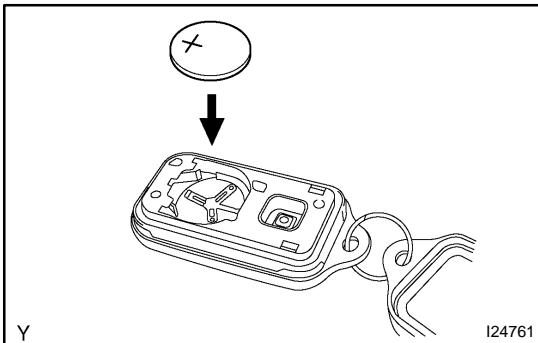
NOTICE:

Do not forcibly pry out the cover.

(b) Remove the battery (lithium battery).

NOTICE:

- Do not push the terminals with your finger.
- Prying up the batteries (lithium battery) to forcibly remove it will cause deformation of the terminals.
- Do not touch the battery with wet hands. Water may cause unexpected rust.
- Do not touch or move any components inside the transmitter as it may interfere with proper operation.



2. INSTALL TRANSMITTER BATTERY

(a) Install a new battery (lithium battery) with the positive (+) side up, as shown in the illustration.

NOTICE:

- Be sure that the positive side and the negative side of the transmitter battery are matched–up correctly.
- Be careful not to bend the electrode of the transmitter battery insertion.
- Be careful that dust or oil does not adhere to the transmitter case.

(b) Check that the rubber cover is not distorted or slipped off, and install the cover.

NOTICE:

Any damage might cause faulty contact of battery (lithium battery) and terminals.